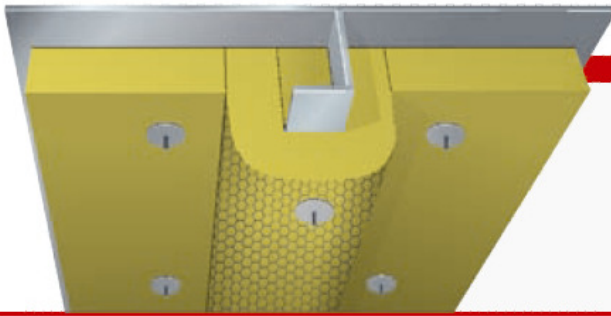


A-30 Aluminium Deck



MED B-4187

Product: Rockwool Marine Batts 45/
Rockwool Marine Wired Mat 90

Density: 45/90 kg/m³

Thickness: Plate 50 mm insulation
Stiffener 45 mm insulation





Construction:

- Plate insulated with one layer of 50 mm Rockwool Marine Batts 45
- Stiffeners insulated with min. 45 mm Rockwool Marine Wired Mat 90.
- Standard alu plate min. 6 mm (± 0.5 mm) thick.
- Stiffeners 9 mm alu.
- $\varnothing 3$ mm alu tipped stainless steel pins fixed with approx 300 mm distance.
- Insulation secured with stainless steel washers of $\varnothing 38$ mm.

Application notes:

- All the connections must be tight, no air gaps.
- Gap under the stiffener must be filled out completely.
- The pins should exceed the insulation by approx 10 mm.

Advantages:

-  **One layer solution**
-  **Fast installation**
-  **Optimal sound properties**
-  **Easy handling**

Surfaces:

- Reinforced aluminium foil
- Glass cloth

Sound:

- Weighted sound absorption
Marine Wired Mat 90, 45 mm $\alpha_w = 0.90$
Marine Batts 45, 50 mm $\alpha_w = 0.75$

